



NEW OVERHEAD GARAGE DOOR IN INSTRUCTIONAL SHOP

# LOPEZ ISLAND SCHOOL DISTRICT

Renovation Project  
Status Update – 2/14/17



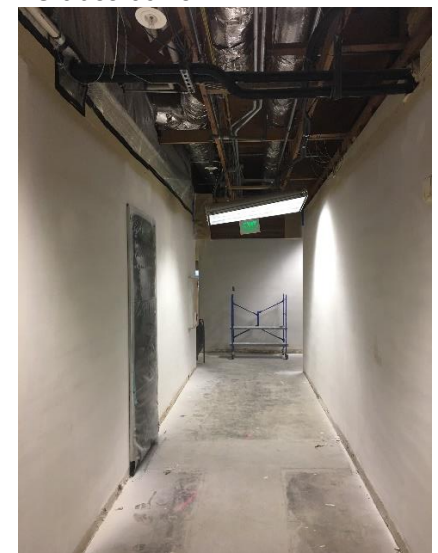
NEW FRAMING AND ROUGH PLUMBING

- Continue rough electric and plumbing in ES office.
- Continue patch and paint walls in all ES areas.
- Demo old ceiling tile & insulation and paint existing grid.



NEW PLUMBING FIXTURES AND ACCESSORIES IN ES20 GIRLS' RESTROOM

- Get framing inspections and hang drywall in ES office.
- Continue installing plumbing fixtures and trim out.
- Continue patching and painting walls in all ES areas.
- Begin flooring preparation and installation in ES areas.
- Begin ceramic tile in new office restrooms.
- Begin installing new ceiling tiles in ES classrooms.



ES HALLWAY PRIMED AND READY FOR PAINT

## Activities – Beginning of February

- Completed IS 19 Instructional Shop and turned over for use.
- Continued framing and drywall in ES office.

## Activities – Upcoming

- Continue installing new ductwork in ES pod areas and office.