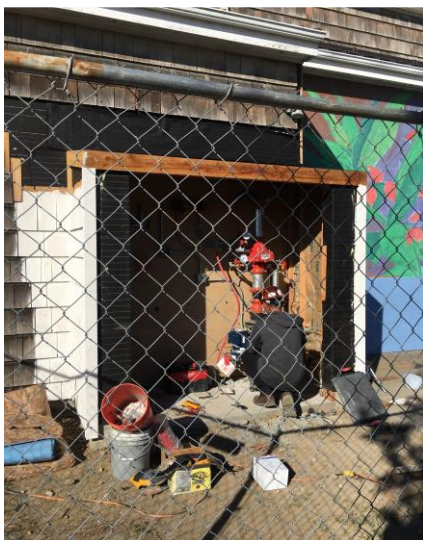




NEW DRYWALL INFILL AND PATCHING IN ELEMENTARY ROOMS

# LOPEZ ISLAND SCHOOL DISTRICT

Renovation Project  
Status Update – 10/04/16



NEW FIRE SPRINKLER RISER ROOM

## Activities – Beginning of September

- Continue rough-in electric and plumbing in MS / HS school restrooms.
- Hang new drywall and tile backer board in MS / HS restrooms.
- Infill walls and drywall patch in elementary classrooms.
- Framing and sheathing for new fire sprinkler riser room.

- Cut and remove concrete slab as needed to install new sanitary waste lines in elementary classrooms.
- Taping and patching new and existing drywall in elementary classrooms.
- Install new door openings in elementary classrooms.

- Finish and patch drywall at MS / HS restrooms.
- Continue installation of new ceramic tile at MS / HS restrooms.
- Continue patch and infill drywall at elementary classrooms.
- Continue paint at elementary classrooms.
- Install new flooring in elementary school classrooms.



NEW DRYWALL AND TILE BACKER BOARD IN RESTROOMS

## Activities – Upcoming

- Continue plumbing work and inspections at MS / HS restrooms.



TRENCHING ELEMENTARY FLOORS FOR NEW SANITARY LINES