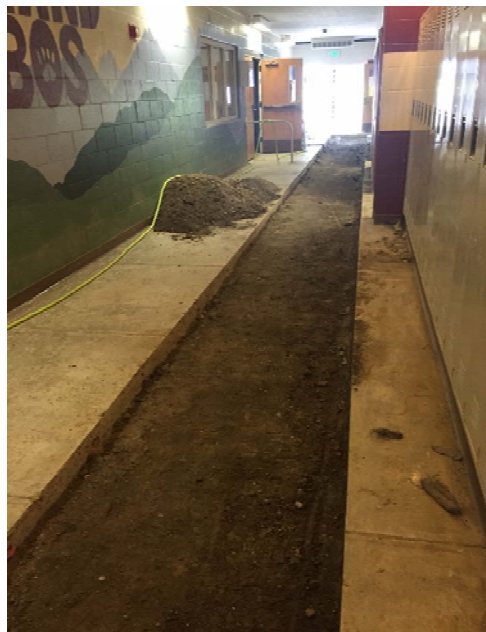




DRYWALL PATCH AND REPAIR IN MS / HS CLASSROOMS.

LOPEZ ISLAND SCHOOL DISTRICT

Renovation Project
Status Update – 07/26/16



UNDERSLAB WASTE LINE INSTALLED,
INSPECTED, AND READY FOR CONCRETE
REPLACEMENT.

- Miscellaneous framing in MS / HS.
- Drywall patching and painting at MS / HS offices and classrooms.
- Place and finish concrete over new waste line in Gym corridor.



MISCELLANEOUS EXTERIOR CIVIL WORK.

- Floor preparation, installation of carpet and base trim in MS / HS classrooms and offices.
- Septic system replacement.
- Earthwork mobilization and miscellaneous exterior civil site work.
- Phase 02: Early start of work in a few Elementary classrooms.

Activities – Late July

- Selective demolition in MS / HS locker rooms and classrooms.
- Plumbing layout and rough-in at MS / HS locker rooms.
- Electrical rough-in at MS / HS.
- Install structural sheathing in MS / HS locker rooms.

Activities – Upcoming

- Install gravel walkway, water / power to Garden hoop house.
- Elementary water heater and water softener relocation.
- Selective ceiling tile replacement.



MS / HS CLASSROOM DRYWALL PATCHING
AND PAINTING.